

**CHLED**  
Jiangsu Shenshida Pneumatic Technology Co., Ltd.

📍 Add: No. 8, Gaoxiang Road, Xishan District,  
Wuxi City, Jiangsu Province CHINA  
☎ Tel: +86-510-68560080 📠 Fax: +86-510-68560011  
✉ E-mail: chled@chled.cn 🌐 Website: WWW.CHLED.CN

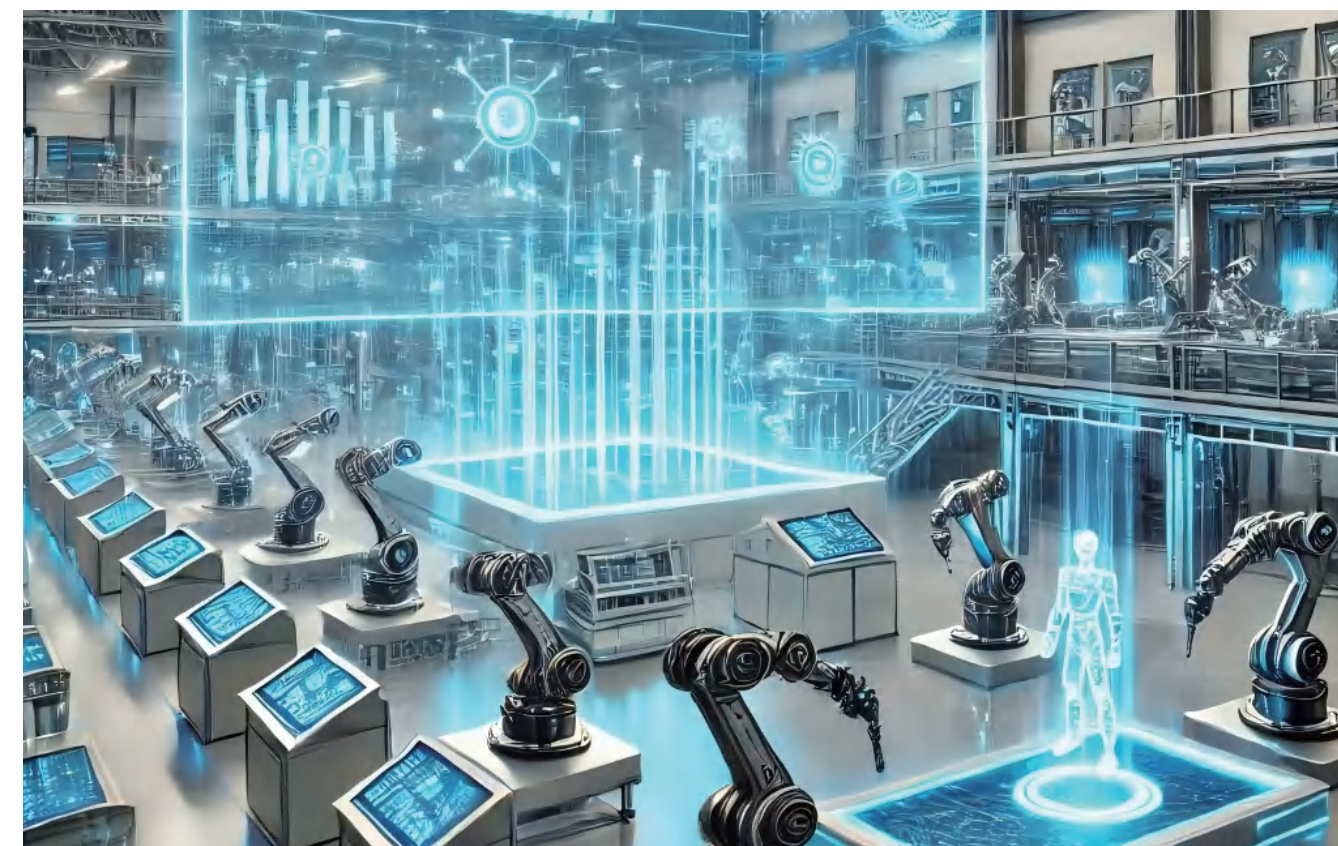
**CHLED**

Pneumatic and Hydraulic



**PRODUCT CATALOGUE**





## COMPANY PROFILE

JIANGSU SHENSHIDA PNEUMATIC TECHNOLOGY CO., LTD.-(CHLED) was established in 2007,It' s a national high-tech enterprise focus on pneumatic and hydraulic components manufacture, sales,research and development,passed "ISO9001" certification, "CE" certification.

The company has a professional team,15 invention patents,more than 50 utility model patents,advanced automated production equipment,products in line with international quality standards, excellent quality, exported to Europe, America, Southeast Asia and other more than 100 countries.

In the economic globalization, the company adheres to the "establish corporate image, create quality brand", face to opportunities and challenges, we sincerely invite customers at domestic and abroad to cooperate and create good results!





### DSBC cylinder series

Cylinder diameter  
φ 32-125



### DSBG cylinder series

Cylinder diameter  
φ 32-125



### SE cylinder series

Cylinder diameter  
φ 32-125



### SU cylinder series

Cylinder diameter  
φ 32-200



### DNC cylinder series

Cylinder diameter  
φ 32-125



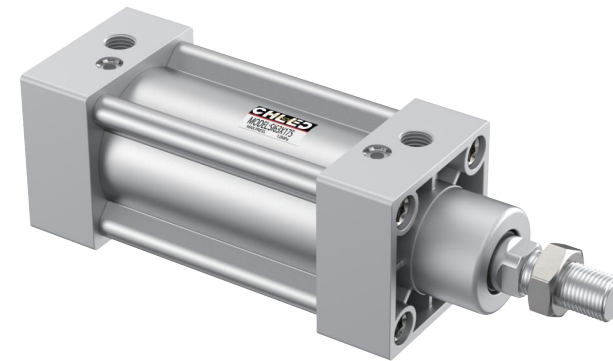
### CP96 cylinder series

Cylinder diameter  
φ 32-125



### SI cylinder series

Cylinder diameter  
φ 32-200



### SC cylinder series

Cylinder diameter  
φ 32-400



### MB cylinder series

Cylinder diameter  
φ 32-125



### CA2 cylinder series

Cylinder diameter  
φ 32-100



### Cylinder Guide Bracket

Cylinder diameter  
φ 16-160



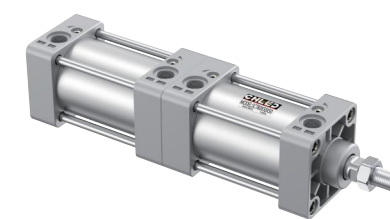
### SCJ cylinder series

Cylinder diameter  
φ 32-200



### SCT cylinder series

Cylinder diameter  
φ 32-200



### SCL cylinder series

Cylinder diameter  
φ 32-125



### DSNU cylinder series

Cylinder diameter  
φ 8-63



### CG1 cylinder series

Cylinder diameter  
φ 20-100



### CM2 cylinder series

Cylinder diameter  
φ 20-40



### CJ2 cylinder series

Cylinder diameter  
φ 6-16



### MI cylinder series

Cylinder diameter  
φ 8-40



### MA cylinder series

Cylinder diameter  
φ 16-63



### MBL cylinder series

Cylinder diameter  
φ 16-63



### MBLJ cylinder series

Cylinder diameter  
φ 16-63



### ADVU cylinder series

Cylinder diameter  
φ 12-125



### ADN cylinder series

Cylinder diameter  
φ 12-125



### CQ2 cylinder series

Cylinder diameter  
φ 12-125



### ACQ cylinder series

Cylinder diameter  
φ 12-160



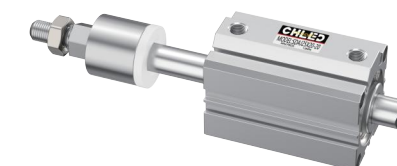
### SDA cylinder series

Cylinder diameter  
φ 12-125



### SDAJ cylinder series

Cylinder diameter  
φ 12-125



### SDAT cylinder series

Cylinder diameter  
φ 12-125





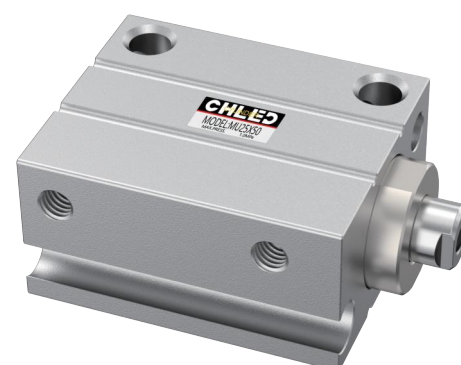
### CU cylinder series

Cylinder diameter  
φ 6–32



### MU cylinder series

Cylinder diameter  
φ 6–32



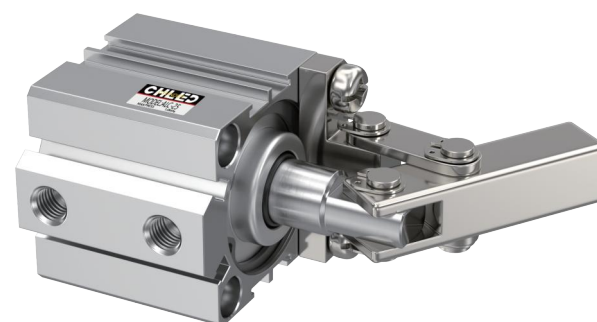
### CJP cylinder series

Cylinder diameter  
φ 6–16



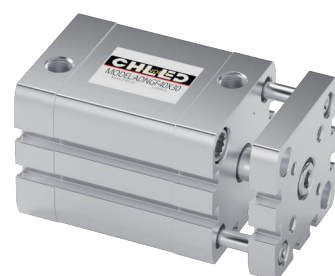
### ALC cylinder series

Cylinder diameter  
φ 25–100



### ADNGF cylinder series

Cylinder diameter  
φ 12–100



### CQM cylinder series

Cylinder diameter  
φ 12–100



### TACQ cylinder series

Cylinder diameter  
φ 12–100



### DPZ cylinder series

Cylinder diameter  
φ 10–32



### CXS cylinder series

Cylinder diameter  
φ 6–32



### STMB cylinder series

Cylinder diameter  
φ 10–32



### TN cylinder series

Cylinder diameter  
φ 10–40



### DFM cylinder series

Cylinder diameter  
φ 6–100



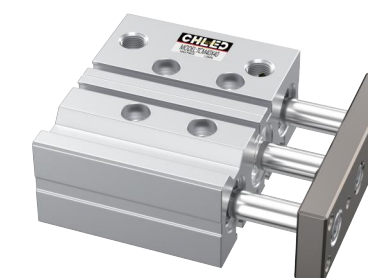
### MGP cylinder series

Cylinder diameter  
φ 12–100



### TCM cylinder series

Cylinder diameter  
φ 6–100





# CHLED Pneumatic Cylinder Series

Rotary cylinder series/Slide cylinder series/Rotary Clamp Cylinder

## MSQ cylinder series

Cylinder diameter  
φ 1-200



## CRB2BW cylinder series

Cylinder diameter  
φ 10-40



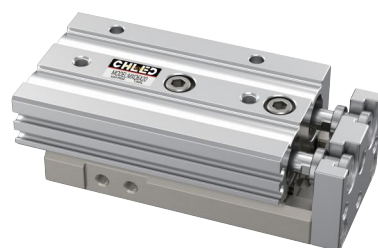
## MXS cylinder series

Cylinder diameter  
φ 6-25



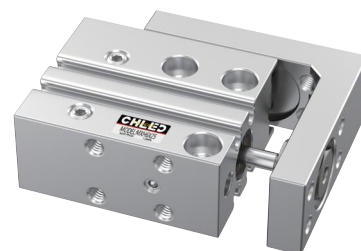
## MXQ cylinder series

Cylinder diameter  
φ 6-25



## MXH cylinder series

Cylinder diameter  
φ 6-20



## ACK cylinder series

Cylinder diameter  
φ 25-63



## MKB cylinder series

Cylinder diameter  
φ 12-63



## QCK cylinder series

Cylinder diameter  
φ 12-63



# Air Gripper Series

CHLED

## MHZ2 cylinder series

Cylinder diameter  
φ 6-40



## MHC2 cylinder series

Cylinder diameter  
φ 6-40



## MHF2 cylinder series

Cylinder diameter  
φ 8-32



## MHL2 cylinder series

Cylinder diameter  
φ 10-40



## MHS2 cylinder series

Cylinder diameter  
φ 16-63



## MHS3 cylinder series

Cylinder diameter  
φ 16-63



## MHS4 cylinder series

Cylinder diameter  
φ 16-63





### DGC cylinder series

Cylinder diameter  
φ 8-63



### OSP cylinder series

Cylinder diameter  
φ 16-80



### MY1 cylinder series

Cylinder diameter  
φ 16-63



### MY2 cylinder series

Cylinder diameter  
φ 16-63



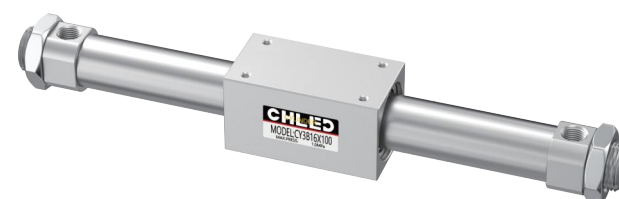
### CY1S cylinder series

Cylinder diameter  
φ 6-40



### CY3B cylinder series

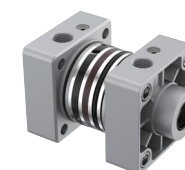
Cylinder diameter  
φ 6-63



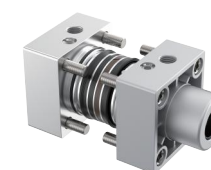
### MA kit



### SU kit



### SI kit



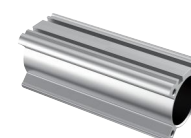
### SDA kit



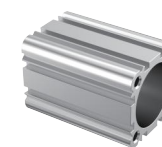
### MBL kit



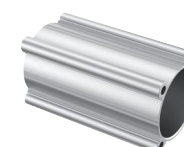
### DSBC barrel



### DNC barrel



### SU barrel



### SC barrel



### TN barrel



### SDA barrel



### CA



### CB



### FA



### TC



### TC-M



### LB



### Y Joint



### I Joint



### U joint



### F joint





MPT Series Cylinders

Cylinder diameter  
φ 63-180



HSG Series Cylinders

Cylinder diameter  
φ 40-125



MOB Series Cylinders

Cylinder diameter  
φ 40-125



HOB Series Cylinders

Cylinder diameter  
φ 40-200



CX-SD Series Cylinders

Cylinder diameter  
φ 20-100



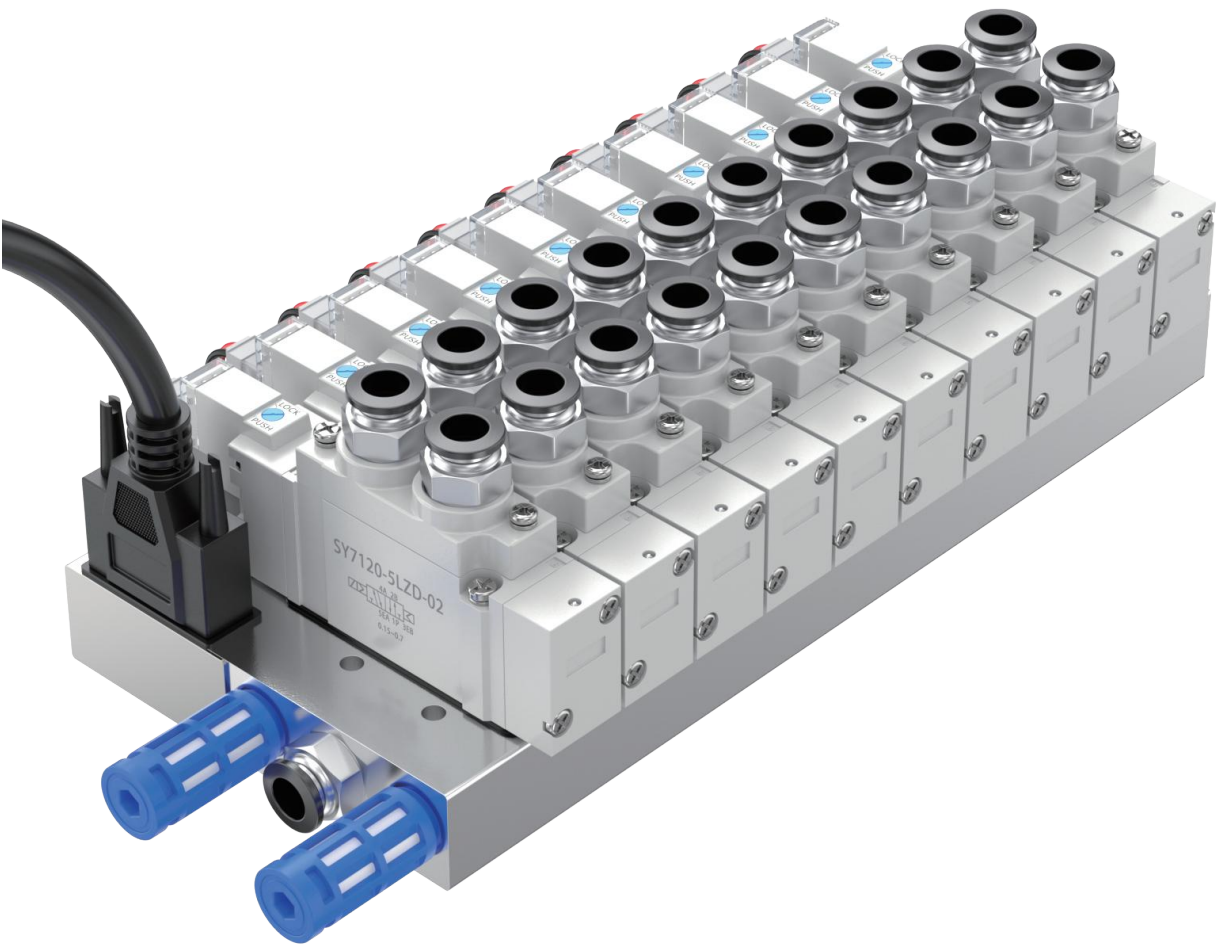
ROB Series Cylinders

Cylinder diameter  
φ 20-63



Valve Terminal

specification  
7120/5120/9120



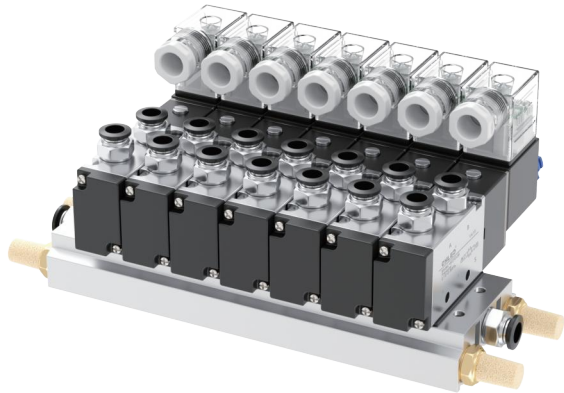
Valve Terminal

specification  
4-24F



Solenoid Valve Manifold

specification  
110-410





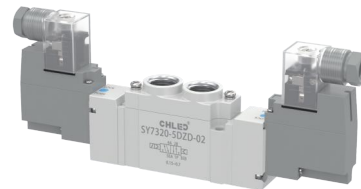
### SY Solenoid Valve



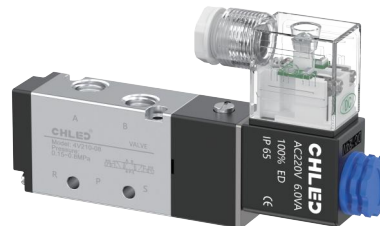
### SY Solenoid Valve



### SY Solenoid Valve



### 4V210 solenoid valve



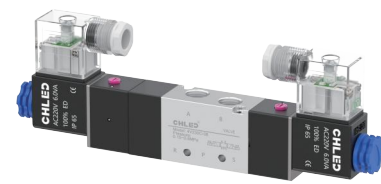
**Specification**  
4V110  
4V210  
4V310  
4V410

### 4V220 solenoid valve



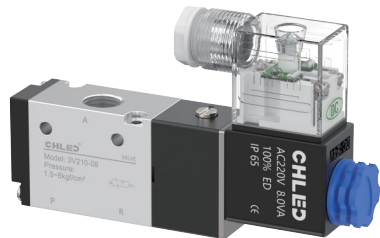
**Specification**  
4V120  
4V220  
4V320  
4V420

### 4V230 solenoid valve



**Specification**  
4V130C/E/P  
4V230C/E/P  
4V330C/E/P  
4V430C/E/P

### 3V210 solenoid valve



**Specification**  
3V110  
3V210  
3V310  
3V410

### 4M210 solenoid valve



**Specification**  
4M110  
4M210  
4M310  
4M410

### 3V1 series



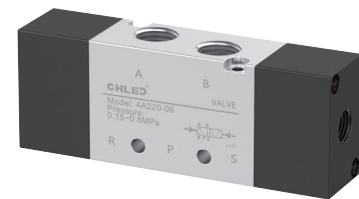
**Specification**  
3V1  
2V025

### 3A Air Valve



**Specification**  
3A110/3A210/3A310/3A410

### 4A Air Valve



**Specification**  
4A110/4A210/4A310/4A410

### 4A Air Valve



**Specification**  
4A120/4A220/4A320/4A420

Flow control valve series/Hand valve series/Foot pedal valve Series

### 2W Fluid control valve



**Specification**  
DN15-DN50

### 2L Fluid control valve



**Specification**  
DN15-DN50

### Angle seat valve



**Specification**  
DN15-DN100

### 4HV series hand valve



**Specification**  
4HV210/4HV310/4HV410

### HV series hand valve



**Specification**  
HV-02/HV-03/HV-04/HV-200D

### HV400 series hand valve



**Specification**  
HV400-02/HV400-03/HV400-04

### K34 series hand valve



**Specification**  
K34R6-08/08D/08L/08A

### 4H series hand valve



**Specification**  
4H210/4H310/4H410

### 4R series hand valve



**Specification**  
4R210/4R310/4R410

### FV420 Foot Pedal valve



### 4F210-08 Foot Pedal valve



### 4F210-08G Foot Pedal valve



QE valve



ASC valve



RE valve



CV valve



HSV valve



KA valve



BQE valve



JM322EB



JM322PB



JM322PP



JMJ-07



MOV321



MOV321LB



MOV321R



MV522TB



FC Air source treatment unit



Specification  
G1/8-G1

FRC Air source treatment unit



Specification  
G1/8-G1

LFR Air filter regulator



Specification  
G1/8-G1

LF Air filter



Specification  
G1/8-G1

LOE Lubricator



Specification  
G1/8-G1

LR Air regulator



Specification  
G1/8-G1



AC2000-02



AC3000-03



AR2000-02



AR3000-03



AC2000



BC2000



AR2000



BR2000



AC2010-02



AC3010-03



AW2000-02



AW3000-03



AFC2000



BFC2000



AFR2000



BFR2000



AF2000-02



AF3000-03



AL2000-02



AL3000-03



AF2000



BF2000

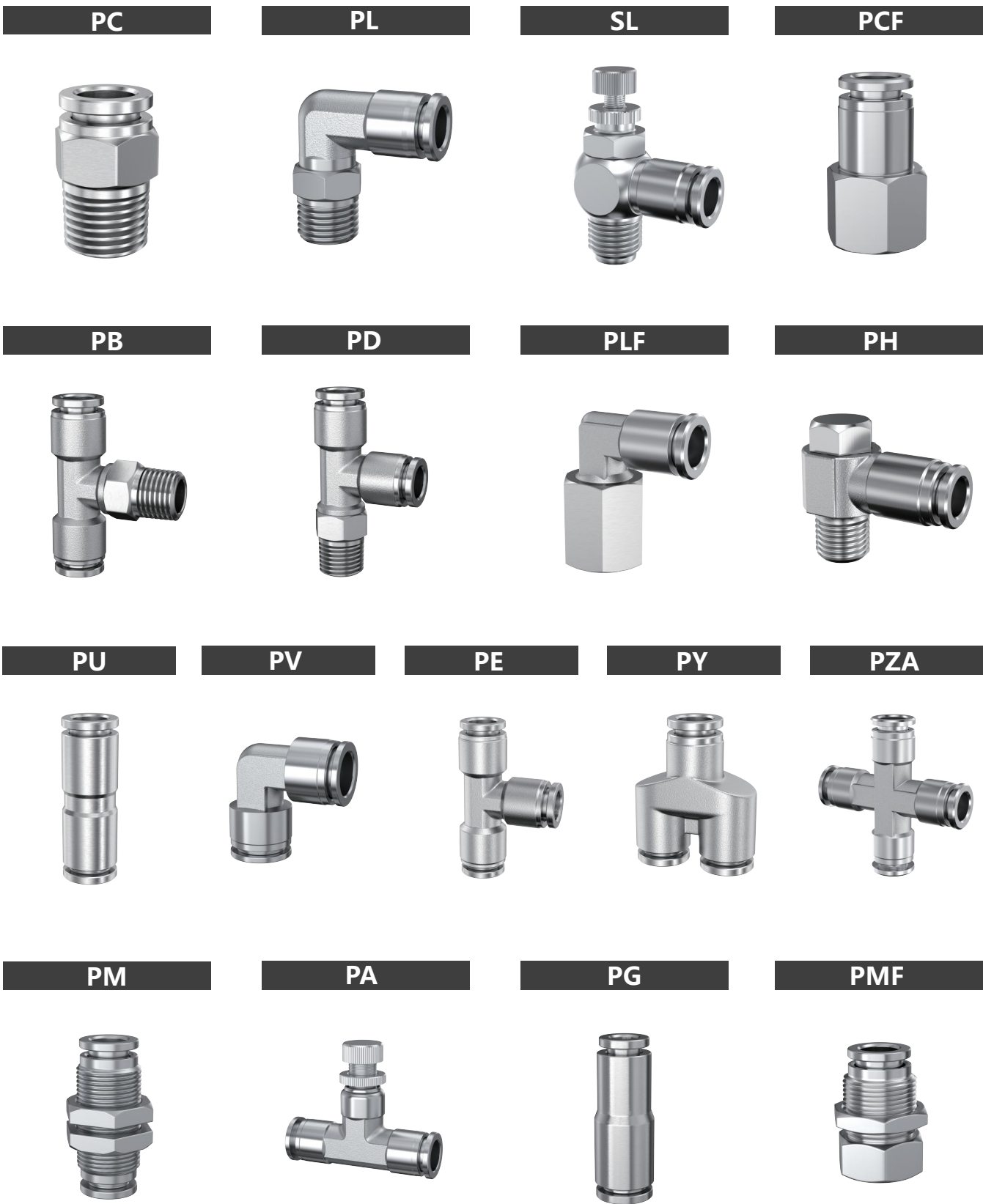


AL2000



BL2000

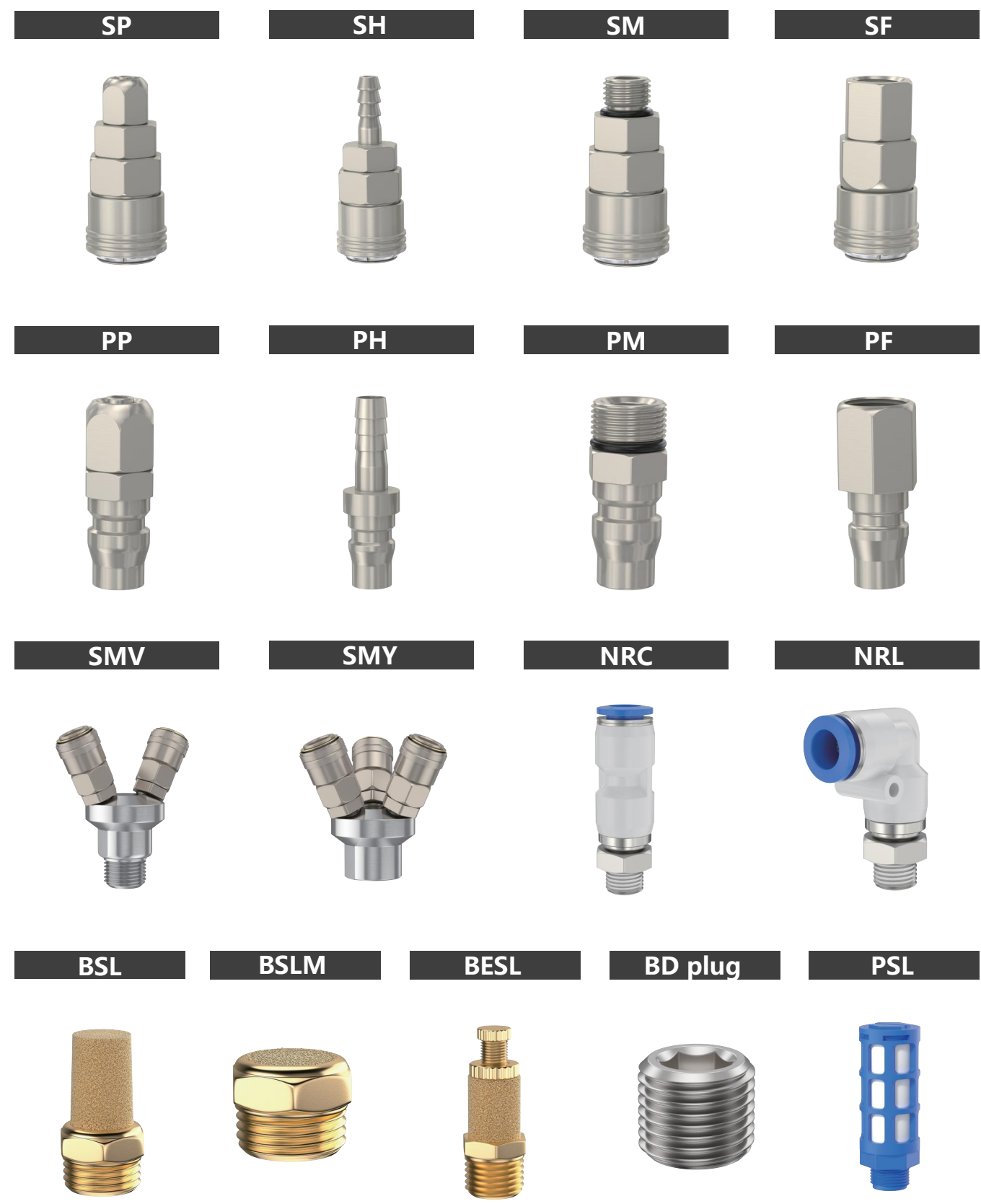






CHLED

Nickelage Quick Coupler/Pneumatic Silencer



Accessories

CHLED

